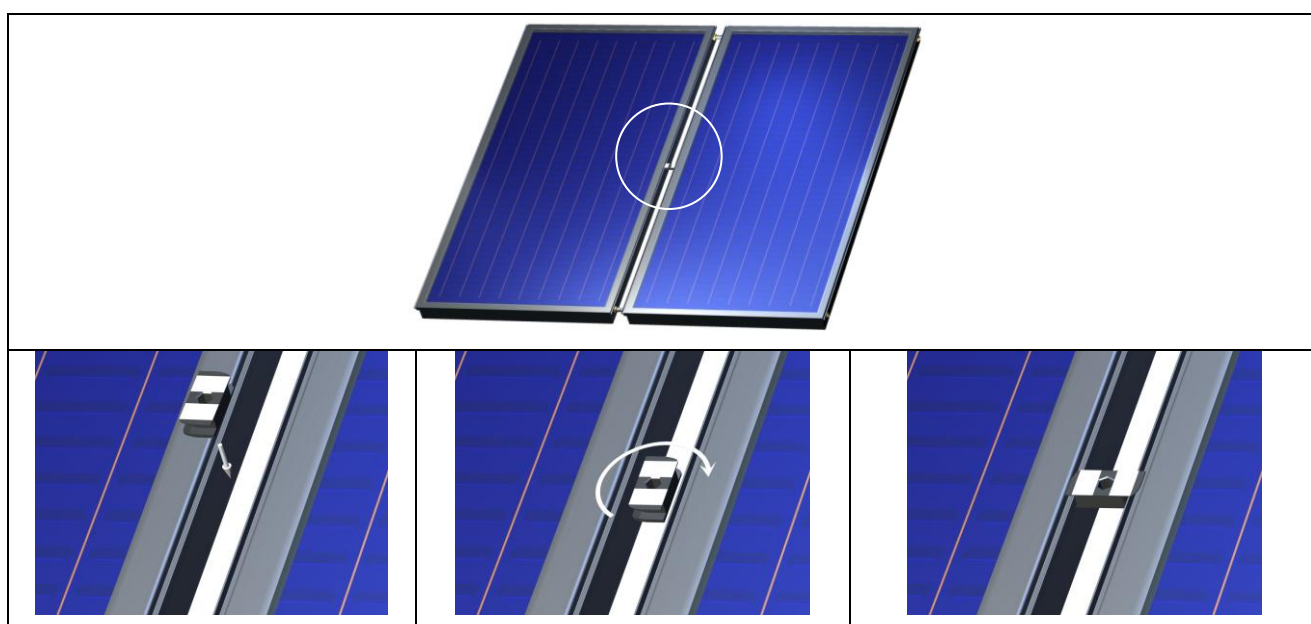
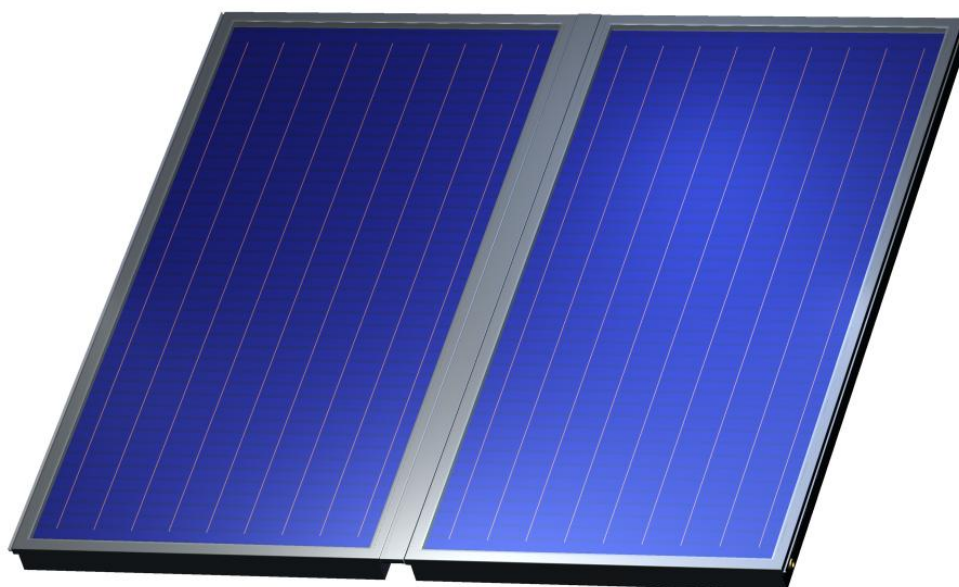


ASSEMBLY INSTRUCTIONS FOR MASKING STRIP KSL



1. List of elements: masking strap KSL, 1 piece.

2. Intended use

Masking strip KSL is made from aluminium sheet, lacquered with colour RAL 7022. It is used to cover the space between flat solar collectors. It improves the look of the installation and protects flared fittings.

3. Assembly

Masking strip KSL should be installed after filling up the installation and checking the tightness of collector connections.

Steps of the assembly:

1. Place the masking strip holder (2) between collector frames (in the middle).
2. Attach the holder between the frames by turning it clockwise.
3. Remove the protective tape from the holder.
4. Insert the masking strip KSL (1) between solar collectors and glue to the holder.
5. Bend the end of the masking strip under the collector's frame.